

R4X Series D

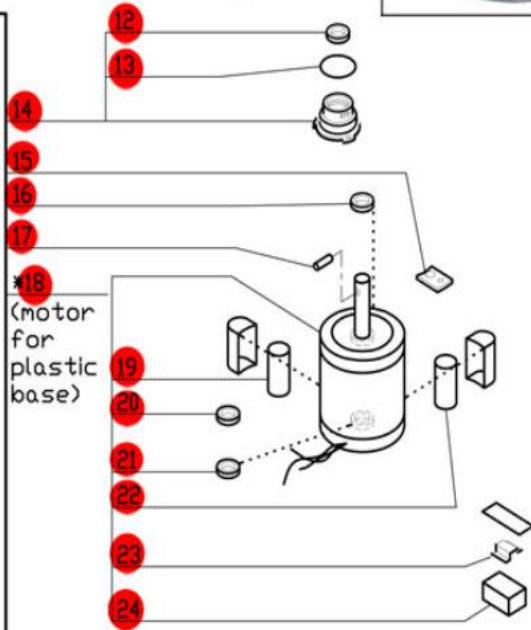
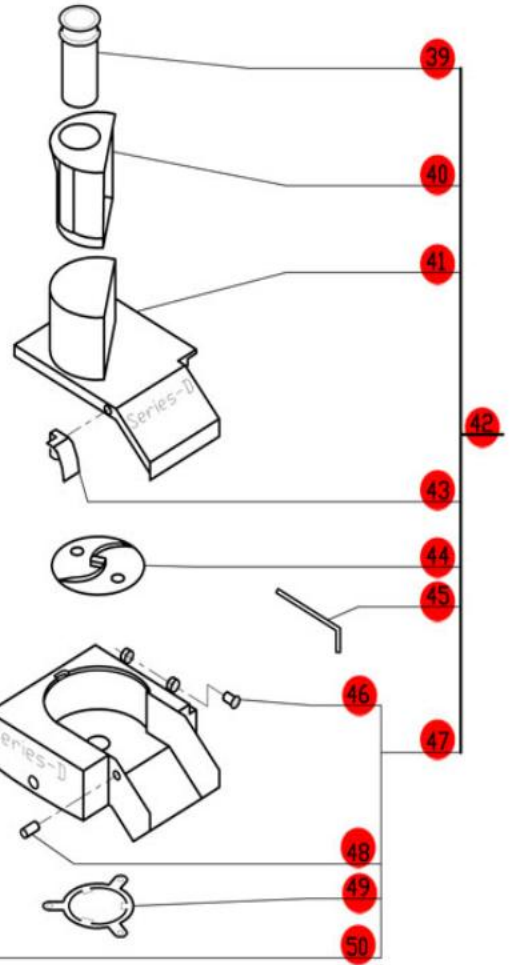
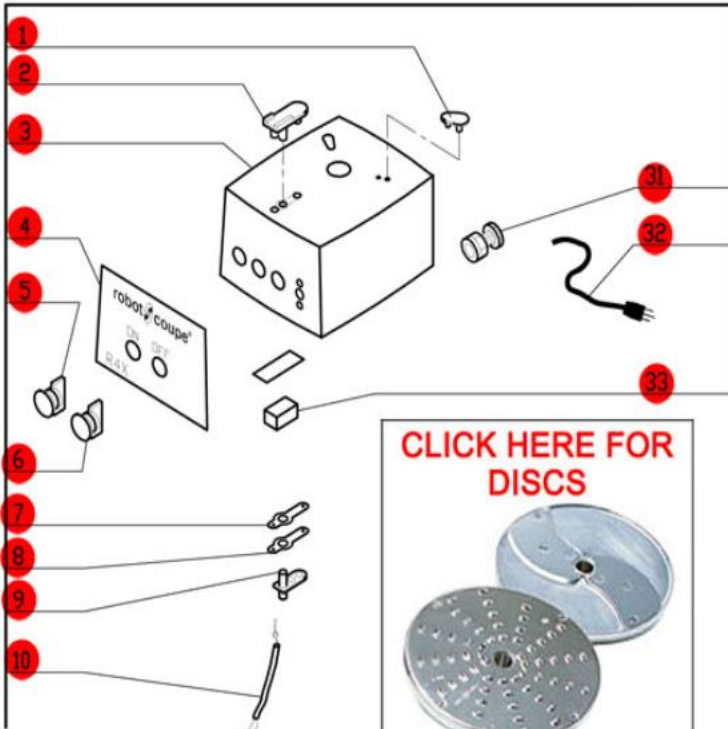
Series D, Serial Numbers 233xxxx03 (USA)

and R4X000600A and Above (Canada)

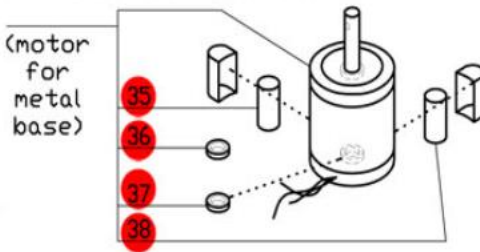
1- Speed, 120 Volt, 1 Phase, 60Hz., 2.5HP.

850 RPM, 7.5 Amps

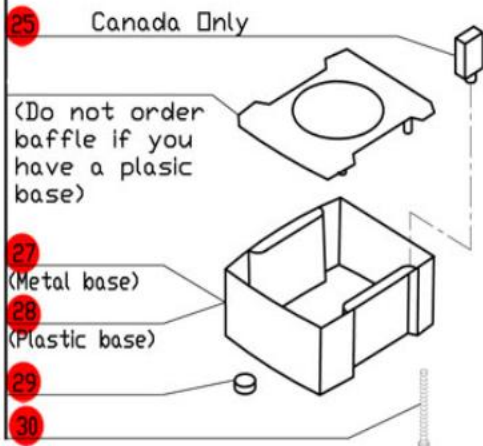
Use **Series-D** Plates.



* RA604E Motor is no longer available. Order number SI94565, R611, 117770, 29620, and four BX658 screws.



**Click on Red Dot
OR
Call us
800-465-6060**



Use only cutting plates listed on the "Series D" Chart.

ACCESSORIES

